

Sonic Leak Detector



The Sonic Leak Detector is a low cost instrument that allows the rapid detection of pressurised gases escaping from any form of plant system.

The ultrasound "noise" generated by a leak can be easily detected by the hand-held unit and the leak location rapidly and accurately identified through the headphones. The red laser pointer accurately and safely pinpoints the source of the leak while the wide range of frequencies that can be detected by the unit range from 20 to 100 kHz. This greatly increases the likelihood of detection. (Most standard leak detectors only offer detection of ultrasound noise at 40kHz.)

The Sonic Leak Detector significantly reduces leak detection times and produces substantial cost savings.

- **Accreditations**

- American Bureau of Shipping Classification Society Manufacturing Process Approval
- ISO 9001:2000 Certificate Number GB13487
- NCAGE Number UOB22
- CE Mark Directives & Laws 89/336/EEC (Electromagnetic Compatibility)
- IIMS Corporate Membership Number C508
- Nautical Institute Membership Number CA00059
- NFPA Membership Number 2800960



L&L Maritime Corporation,
DISTRIBUTORS

780 Eden Place, West Vancouver, BC V7T1R9, Canada
T: +1(604) 922.8342; F: +1(604) 922.8829; info@llmaritime.com; www.llmaritime.com

- **The Complete Sonic Leak Detector Kit includes:**

- Sonic Leak Detector unit
- Hard hat compatible headphones
- Full operating instructions
- 2 x 9v PP3 battery
- Foam-lined black polymer carry case



- **Sonic Leak Detector Technical Specifications**

- Ultrasound Frequency Range: 20KHz - 100KHz
- Microphone: Broadband electret
- Operating Controls: ON/OFF and headphone volume

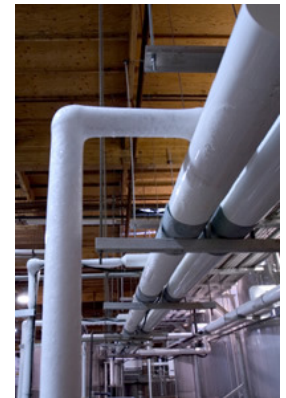
- **Features**

- Red laser pointer to precisely locate the leak and 3.5mm stereo jack plug (suitable for stereo or mono headphones)
- Unit Dimensions: 190 x 90 x 60mm
- Unit Weight: 190g
- Headphones Weight: 50g
- Temperature Range: -10°C to + 50°C
- Power Supply: 1 x 9v PP3 disposable or rechargeable battery
- Battery Life: 40 hours nominal with a PP3 alkaline battery
- Carry Case Dimensions: 220 x 200 x 80mm
- Operational Weight: 244g
- Shipping weight: 600g



- **Sonic Leak Detector Applications**

- Locates leaks in air, steam and non-flammable gas systems including pipes, fitting, valves, cylinders and pressure vessels.
- Locates electrical arcing.
- Pinpoints leaks in brake systems, tubes, tires and radiators.
- Detects leaks in Vacuum systems.
- Finds the source of wear in bearings.
- Detects air conditioning and refrigeration leaks.



- **How to operate the Sonic Leak Detector**

1. Check the battery by turning the Sonic Leak Detector on, the red laser should work continuously. If the laser flashes this indicates the battery is low and needs changing.
2. Plug in the headphones or earphone.
3. A hiss will come from the headphones and its volume adjusted by the volume control.
4. All the ambient ultrasonic sound will be heard through the headphones.
5. By moving the Leak Detector around you can home in on any particular hissing or crackling sound. The laser will pin-point the leak.



L&L Maritime Corporation,
DISTRIBUTORS

780 Eden Place, West Vancouver, BC V7T1R9, Canada
T: +1(604) 922.8342; F: +1(604) 922.8829; info@llmaritime.com; www.llmaritime.com